

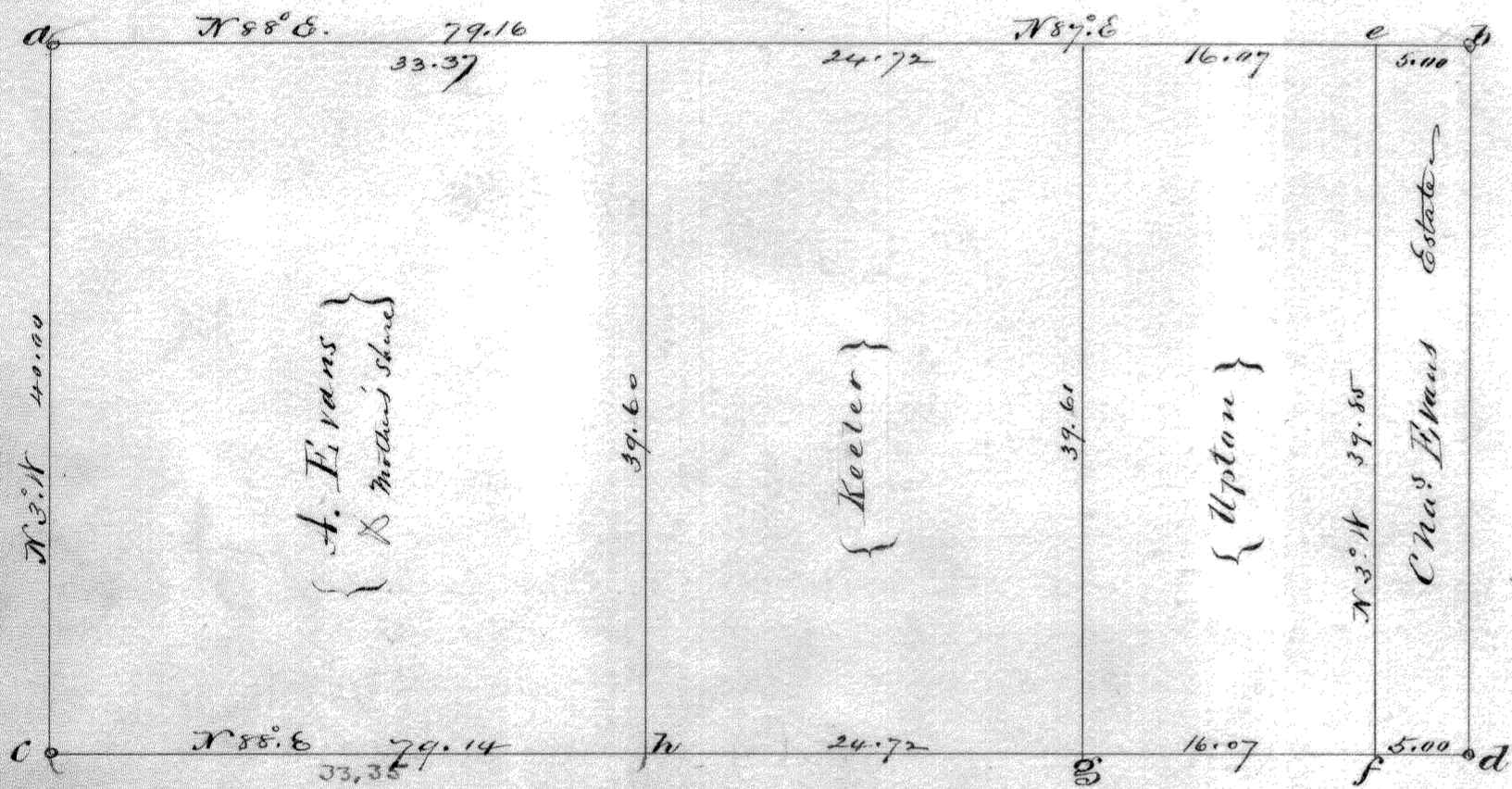
P. q. S. R. 5. E. Secs 13 & 24 <sup>1/2</sup> Secs 18 & 19 S. R. 6. E. corner

Survey No Three Hundred and Ninety Three  
On Friday June 26 1863 I established the corner of the above  
named sections from the remains of the original trees and found  
by digging the bottom of the original state set a Limestone 24 inches  
long 3 x 6 inches and made for witness tree Mulberry 6 inches in diam.  
S. 47 1/2 W 3.20 chains distant - Also found Quarry post between  
sections 18 & 19 and divided the distance 39.68 chains on the road

E. W. Lenderson  
Surveyor of Lucas Co. Ohio

P. q. S. R. 7. E. 3rd sec 33 N 1/2

Survey No Three Hundred and Ninety Three and one half



On the 11<sup>th</sup> & 12<sup>th</sup> days of July A. D. 1864 I surveyed the above  
1/2 section according to the above plat Warren H. Howe and Myron  
Majors being duly sworn as chainmen - The sec cor at "a" was  
Established by crossing the section lines original corner gone -  
The sec cor at "b" has been kept. 2<sup>d</sup> post at "c" no bearing trees given  
made corner at 40 chains from "a" (Bearing tree B. C. 15. N. 69 W 32 links  
2<sup>d</sup> post at "d" no trees given I found a stake which which had been  
set for corner made a corner at "e" (Eln 18. W 19 W 17 links  
made a corner at "f" (Eln 10<sup>th</sup> N. 24 W 6 links made a corner at "g"  
Bitternut 9<sup>th</sup> N. 50 W 30 links at "h" corner Hickory 10<sup>th</sup> N. 38 E. 41 links

H. M. White  
Dep. Surveyor